

To be able to use the Multi-Network Manager you NEED to follow the instructions below!

Note: MNM is useful if you are using multiple connections on the SAME connector (LAN for example) Otherwise W2000 is already good.

Remember that in order to be able to keep the same profile (desktop, favorites, Outlook settings, ...) you MUST switch network within your profile in the ECEWIN2K domain.

This means that if you are at home and want to use the cable modem, you have FIRST to log in ECEWIN2K (even if you are not at UCSB!) then use the Apply of the MNM of the home. Then once finished, reapply the Office settings before coming to school. Same thing when you are on other networks. If for some reason you make a mistake. You have to re-log as your local administrator and reapply from there the Office settings...

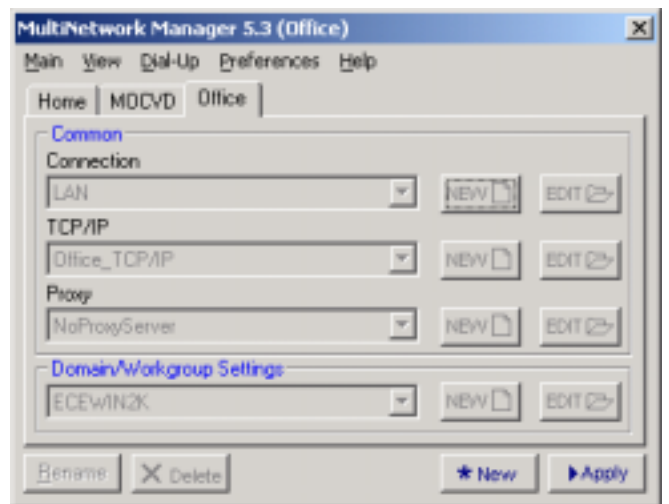
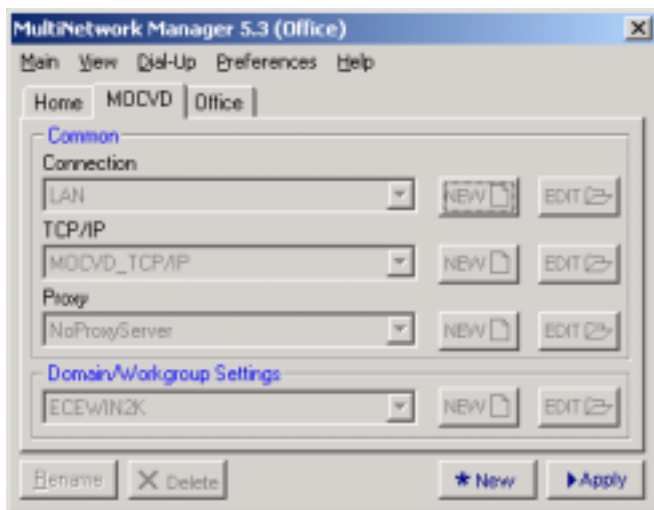
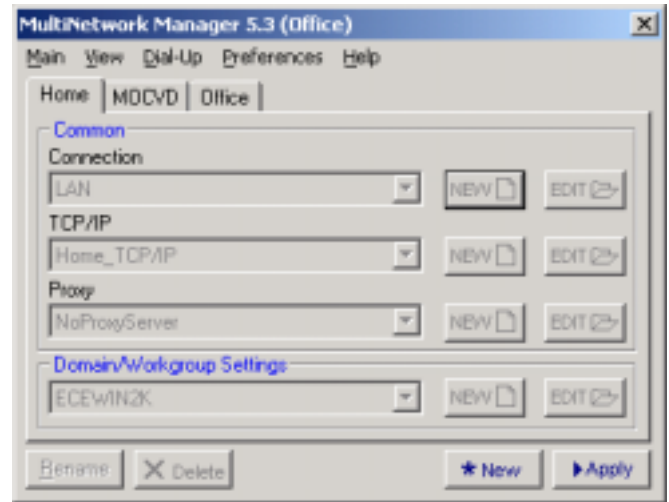
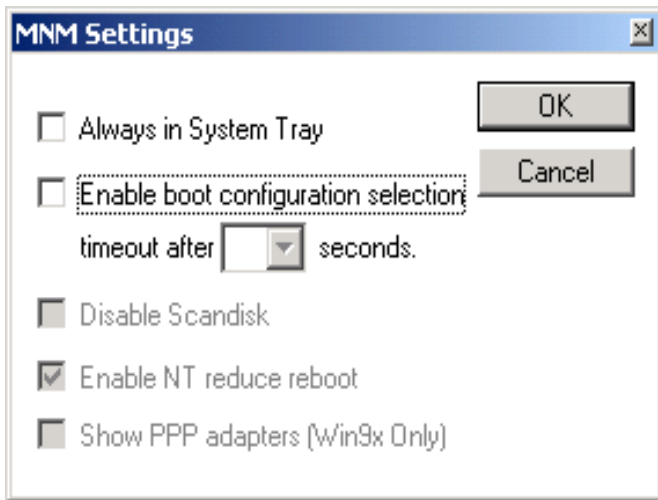
The first time you set the Office settings, Dario, Pfm or John need to set the password to lo in the domain: it will be stored by MNM, but you won't be able to see it! If you use MNM incorrectly you will loose that password! SO keep locked at least your office settings once they are done.

Also be sure to have installed MNM as well as all the other software from your local administrator profile. The software can be downloaded from http://www.globesoft.com/Common/frm_products.html and the password is in our licenses file in the web.

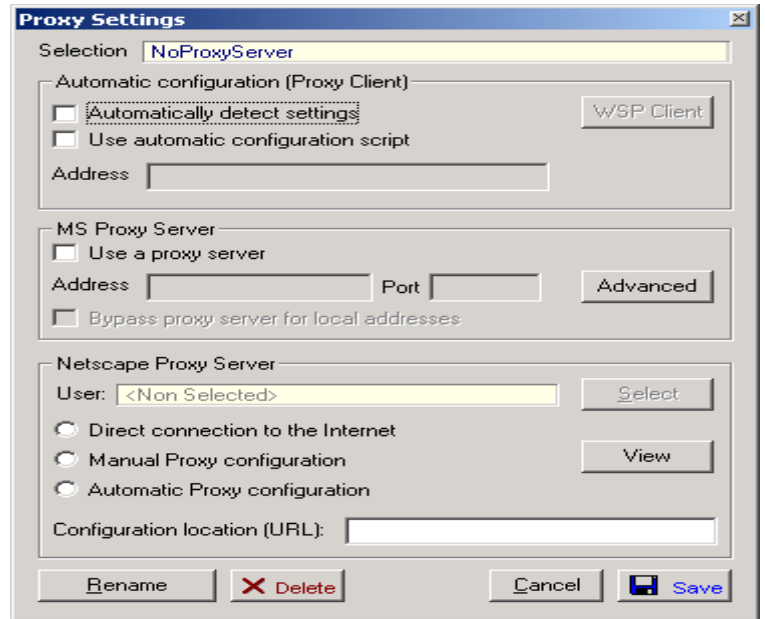
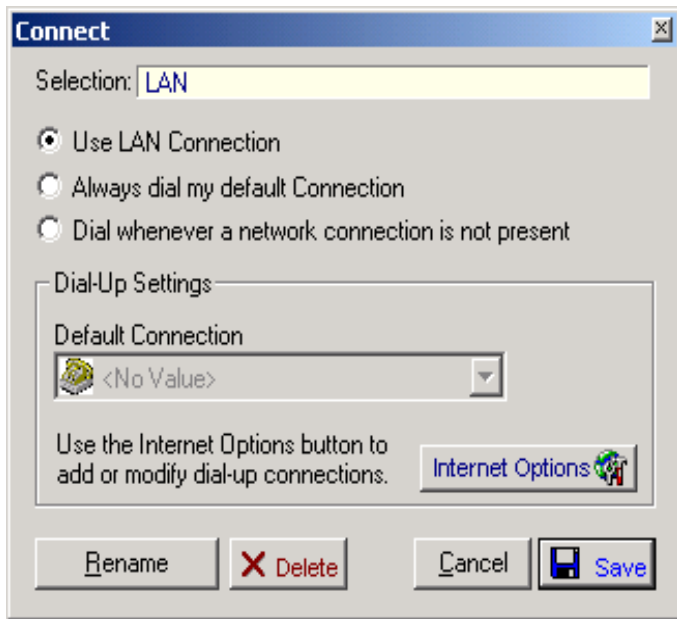
Here follows as example the Sten's settings. He uses home cable, MOCVD lab and our office:

COPY exactly the settings for our office. For the correct settings in the other networks, you have to talk with the other networks managers... Usually home has a dynamic TCP/IP, while other UCSB departments have their own settings. Do not just copy the TCP/IP of other computers: get your own IP for all the subnet you use! Security restrictions could detroy your profile if your computer is not correctly registered is the subnetwork!

So the correct sequence must be: log in ECEWIN2K (wherever you are, the physical presence at UCSB is not important, for your laptop), change network, when you are done and decided to come to the office, change again to office settings. You should not be asked to restart ever! If this happens, your settings are incorrect...

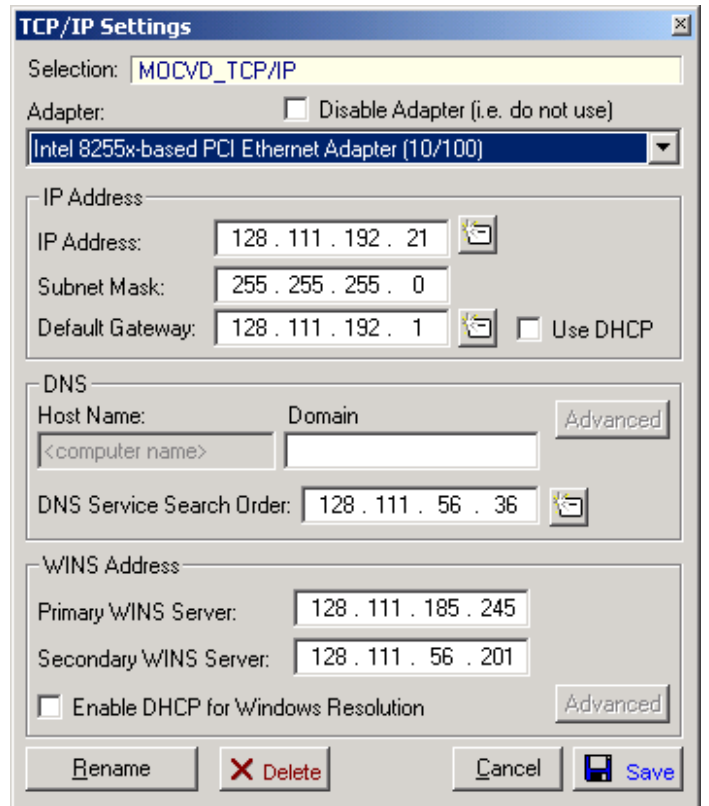
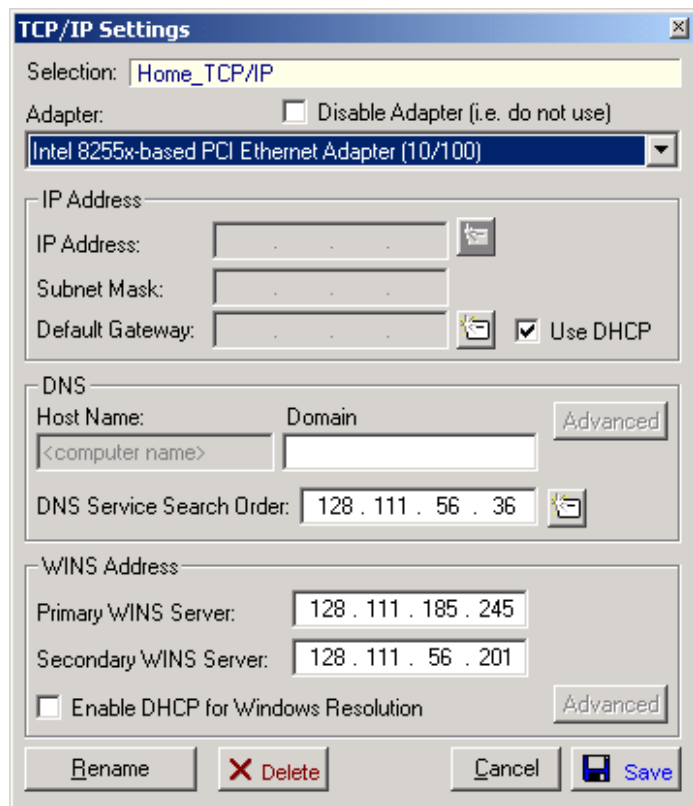


In most of the cases, you use the LAN and there is no proxy server.



Usually at home DSL and Cable have a DHCP, which decides automatically your TCP/IP stuff... On other UCSB sites (remember ask the local network Administrator for the settings) you should get an IP from the local Administrator with the local subnet (we have 185, 56 and 21). In the MOCVD is 192. So you must change IP and Gateway only...

Outside UCSB, just try to get into a workgroup, not a domain, so your profile will stay the same...



For office settings (remember to lock them after we the Administrator set the password) the following are the correct settings for IP, DNS and Domain settings, respectively

TCP/IP Settings

Selection: Office_TCP/IP

Adapter: Disable Adapter (i.e. do not use)
Intel 8255x-based PCI Ethernet Adapter (10/100)

IP Address

IP Address: 128 . 111 . 185 . 174

Subnet Mask: 255 . 255 . 255 . 0

Default Gateway: 128 . 111 . 185 . 1 Use DHCP

DNS

Host Name: Domain *Advanced*

<computer name>

DNS Service Search Order: 128 . 111 . 56 . 36

WINS Address

Primary WINS Server: 128 . 111 . 185 . 245

Secondary WINS Server: 128 . 111 . 56 . 201

Enable DHCP for Windows Resolution *Advanced*

Rename Delete Cancel Save

Advanced DNS Settings

Adapter: Intel 8255x-based PCI Ethernet Adapter (10/100)

DNS

IP	Up
128.111.56.36	
128.111.1.2	Down
128.111.1.1	
128.111.56.201	

Add Edit Remove

Cancel OK

Network Client Settings

Selection: ECEWIN2K

Computer Name: NEPTUNE

Member of

Workgroup:

Domain: ECEWIN2K

DNS Suffix: ece.ucsb.edu

Modify/Create Account in domain

UserName:

Password:

Rename Delete Cancel Save